

Southern Science Symposium: Cell Biology & Careers

REGISTER NOW!

November 17, 2012

8:00 am - 4:00 pm

Ponce School of Medicine and Health Sciences
Psychoneumetrics building



The long road to personalized cancer therapies: it's back to basics

Joaquin Espinosa, Ph.D.

HHMI Early Career Scientist

Associate Professor & Co-Leader, Molecular Oncology Program

Director, The Functional Genomic Facility

University of Colorado Cancer Center



From 'jibara' to 'profesora': A reflection of my Life journey

Johana Vallejo-Elias, Ph.D.

Associate Professor

Department of Physiology

Midwestern University

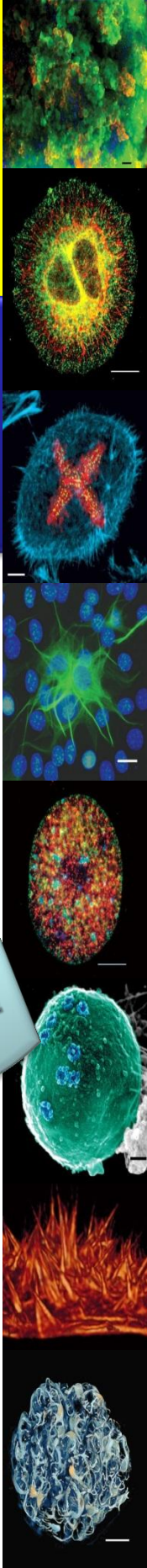
Submit an abstract!

Scientific sessions, graduate school exhibitors, networking lunch, career panel: *To be or not to be a Ph.D.*, poster session & awards, raffles and more!

Abstract submission deadline: **NOVEMBER 2**

Free registration! Deadline: **November 9**

www.psm.edu/ssss • symposium@psm.edu



Images: Nature Reviews
Molecular Cell Biology, 2004